

# Times Literary Supplement (TLS) Centenary Archive

## AN UNPARALLELED LITERARY RESOURCE

The *Times Literary Supplement (TLS) Centenary Archive* offers a rich new research database for students and researchers of English literature and other humanities or social science subjects. Unparalleled opportunities for tracking the views of influential opinion makers, the response of their peers, the controversies of the day and how they developed, are now possible in an easy-to-navigate digital environment.

## FULLY INDEXED ARCHIVES AT THE CLICK OF A BUTTON

By combining the complete edition of the *TLS* from 1902-1990, the *TLS Index* and new information on hitherto anonymous contributors — a powerful instrument becomes available to explore the literary activity and critical opinion makers of the 20th century in greater depth.

More than 250,000 reviews, letters, poems and articles in more than 5,000 issues of the *TLS*, searchable by author and/or contributor, are available here in the context in which they were originally published. Users

can access any page via the online version of the published index; by a book's title or author; or through subject-headings.

## CONTRIBUTOR IDENTITIES NOW REVEALED

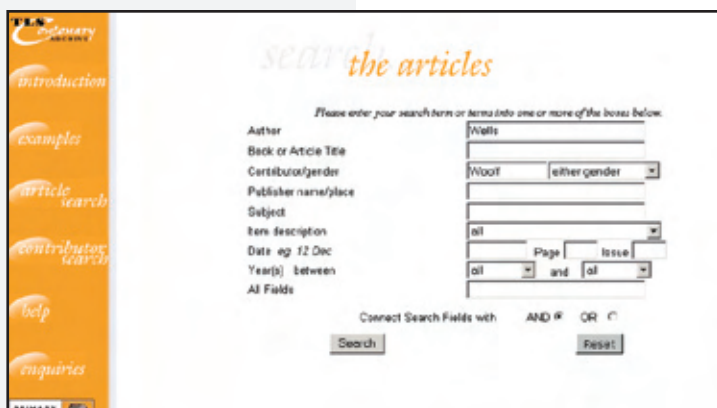
The identities of contributors to the *TLS* — reviewers and writers of essays, letters and poems — are disclosed for the first time in this database. New writings and influential criticism of hundreds of the century's most important writers and thinkers, once kept anonymous to encourage an open forum, are now attributed to a wide range of contributors.

Wherever possible, a contributor's biographical information is included, allowing scholars to get a better understanding of the reviewers. The *Times Literary Supplement Centenary Archive* will enable far-reaching research into literary trends otherwise buried in the linearity of the paper edition.

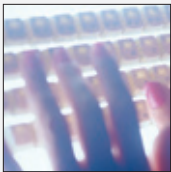
## RESEARCH HIGHLIGHTS

With this comprehensive online resource you can:

- Research specific contributions by leading literary figures
- Discover how works regarded as classics were received upon publication
- Research the number of reviews by individual contributors
- Explore the social groupings to which each individual contributor belonged
- Access publications of special issues
- Read reviews of foreign language books



▲ A variety of search options provides users with targeted and focused results



### FREE TRIAL

Time Literary Supplement Centenary Archive is available for a free trial. Please contact your Gale Sales Representative.

In the U.S. and Canada: 1-800-877-GALE or visit [www.gale.com](http://www.gale.com)

Outside the U.S. and Canada: e-mail [international@gale.com](mailto:international@gale.com) or visit [www.gale.com/world](http://www.gale.com/world)

### TIME-SAVING RESEARCH MADE EASY

Subscribers can save time and access the right information faster than ever by using simple search tools.

Looking for a specific article? Locate it by using any or all of the following:

- Author
- Book or article title
- Contributor/gender
- Publisher name/place
- Subject
- Item description
- Date
- Year(s)
- All fields

Looking for a specific contributor? Locate them and their works by using any or all of the following:

- Name/gender
- Year of birth
- Occupation
- Subjects reviewed
- Languages reviewed
- Non-TLS journalism
- All fields

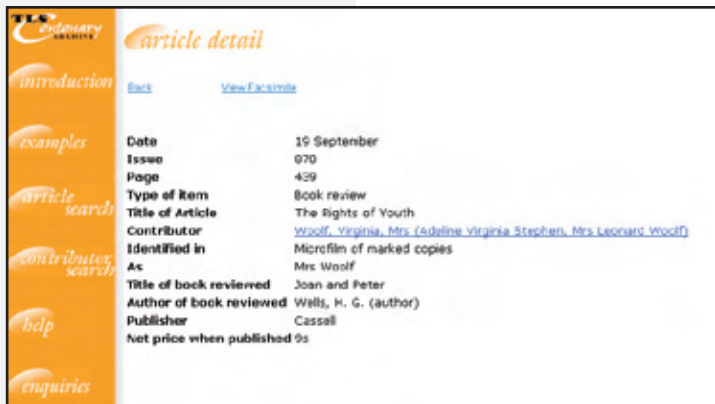
### CONVENIENT PRODUCT FEATURES

Times Literary Supplement Centenary Archive offers students and researchers these useful features:

- Remote access available via username/password or IP verification
- Printing available through specialized functionality providing a choice of half, full or double size pages in landscape or portrait
- Monthly usage statistics available via automatic e-mail notification to single or multiple e-mail addresses
- Image scaling for all products that include facsimiles of the primary source document
- Forward and backward page navigation incorporated for multiple page documents

### TECHNICAL REQUIREMENTS

To access the Times Literary Supplement Centenary Archive, you will need an IBM/IBM-compatible personal computer at 486 class or higher, with a mouse and a suitable Java-enabled Internet browser and a TIFF image viewer for downloading full-page, high resolution images.



▲ Articles provide complete bibliographic information, title of work reviewed and author and publisher information



▲ The database offers complete facsimiles of articles as they appeared in the Times Literary Supplement that allow students and scholars to explore in greater depth the literary activity and critical opinion makers of the 20th century