



## EXPLORING Shakespeare

### Detailed analysis of most-taught plays and the world of Shakespeare

Shakespeare's plays are among the most-taught literary work in the world. *EXPLORING Shakespeare* is designed to help students of the Bard better understand his four most-studied plays — “Hamlet,” “Julius Caesar,” “Macbeth” and “Romeo and Juliet.”

Editors of this cross-curriculum database have included descriptions of historical events and cultural influences that thoroughly examine the plays — from broad overviews to the nuances of characters, scenes and themes.

Result screens, including the full text of each play, are surrounded by a multimedia console that allows users to explore links that make the life, times and works of Shakespeare accessible and relevant to today's high school and undergraduate-level student.

### A wide range of applications

Students and educators will appreciate the diverse uses of *EXPLORING Shakespeare*.

- For example, *EXPLORING Shakespeare* acts as the foundation of a classroom learning unit or a high-interest addition to an established Shakespearean or literature library
- Provides an abundance of ideas for lesson plans and is designed to support curriculum integration, team teaching and the use of technology in the classroom

### Benefits

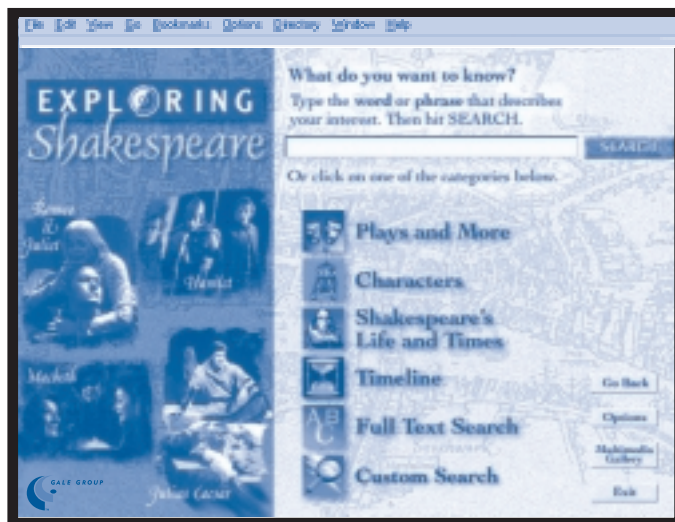
Put students in touch with the world of Shakespeare and provide them with these much-appreciated benefits:

- Wide range of research results
- Fast access and navigation of content
- Consistent interface with other Gale DISCovering® Program titles
- Complex search strategies that are easily implemented

School and other network administrators will find the common interface, support of national and local standards and authority offered by the Gale Group reassuring when considering The Gale DISCovering® Program for wide-area applications. *EXPLORING Shakespeare* via the Internet offers 24-hour remote access from any Web-capable computer.

### Coverage

Full text and analytical coverage of Shakespeare's four most-studied plays as well as essays on life and times of Shakespeare and the Globe Theatre, culture and customs of the Elizabethan period and historical perspectives on the period wherein each drama is set.



▲ A range of search features lets students target their research

### What you'll find

- Full text of four plays from *The Arden Shakespeare*
- Overview essays synthesizing each play's significance
- Plot synopses by act, including explications of key scenes
- Character descriptions and critical analysis of major characters with links that help establish relationships to other characters
- Original essays on the major themes of Shakespeare's plays
- Searchable timelines by year, decade, century or word or phrase
- Specially commissioned audio recordings as well as video clips and stills from plays

## The joy of discovery

Each title in The Gale DISCovering Program operates independently but offers a common interface — easily learned and applied across databases. Designed to offer users a multidisciplinary understanding of a particular curriculum-related topic, the databases incorporate numerous cross-references to people, places, ideas that add to a deeper understanding of literature, science, history, social studies and multicultural studies.

Databases in The Gale DISCovering Program include: *EXPLORING Novels*, *EXPLORING Short Stories*, *EXPLORING Shakespeare*, *EXPLORING Poetry*, *DISCovering Authors® Modules*, *DISCovering® Nations, States and Cultures*, *DISCovering® Biography*, *DISCovering® Science*, *DISCovering® U.S. History*, *DISCovering® World History* and *DISCovering® Multicultural America*.

## Help students appreciate some of the world's greatest literary works with *EXPLORING Shakespeare*

### On CD-ROM:

A Curriculum Administrator Top 100 Product. Search the CD-ROM by act, scene, character, words and phrases and more. Uses "Frames," which allows users to display several result screens simultaneously. CD-ROM package includes a 32-page teacher's guide. Requires Windows™\* operating system.

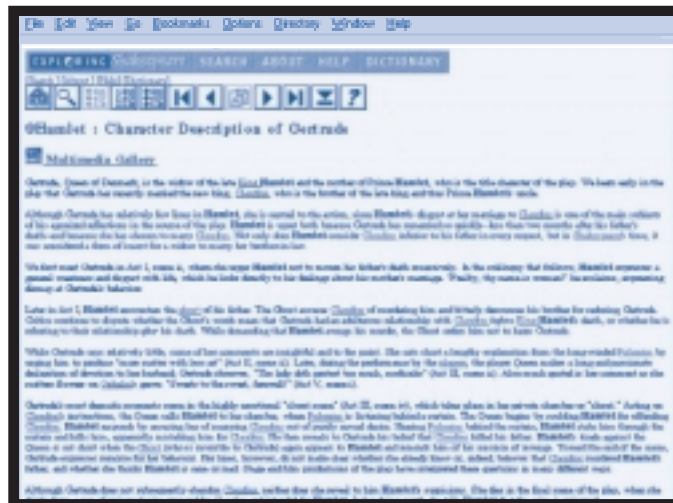
### On the Internet:

*EXPLORING Shakespeare* via the Internet offers the same search functions as the CD-ROM version, except the timeline is not hyperlinked to other data and the interface does not support "Frames." Leasing data with access via the Internet involves less maintenance, less infrastructure and allows you to more easily adapt your collection to changing curricular or budgetary demands. Runs on any Internet-capable computer.

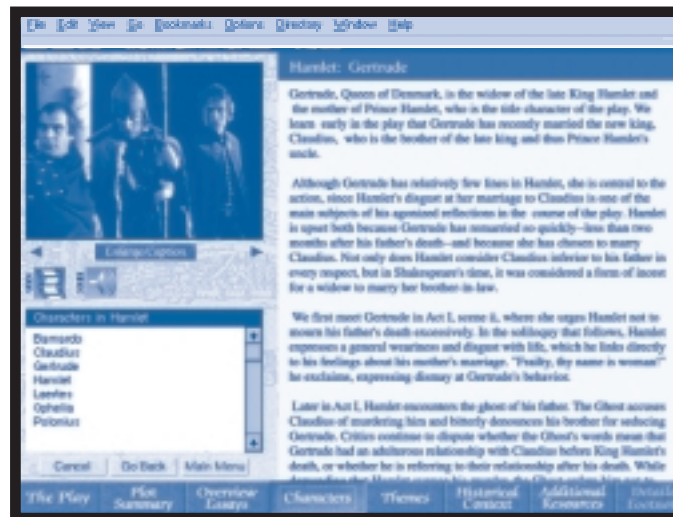
## Availability

*EXPLORING Shakespeare* is available in CD-ROM format or via subscription through the Gale Group's online reference service. To further explore *EXPLORING Shakespeare*, go to [www.galegroup.com](http://www.galegroup.com). For additional product or pricing information, contact your Gale Group Representative. Call 1-800-877-GALE (U.S. and Canada), or send an e-mail to [international@galegroup.com](mailto:international@galegroup.com) (outside the U.S. and Canada).

\*Windows is a trademark of the Microsoft Corporation.



Choose *EXPLORING Shakespeare* via the Internet for universal access by multiple users



Essays on main characters and themes are critical to understanding Shakespeare's works



Contact your Gale Group Representative for more information. Call 1-800-877-GALE (U.S. and Canada), or send an e-mail to [international@galegroup.com](mailto:international@galegroup.com) (outside the U.S. and Canada)