

EXPLORING Poetry

Interpretation, explanation and analysis of the most-studied poems

With its innumerable search options and clear, line-by-line explications of 275 of the best-loved and most-often-studied poems of all time, *EXPLORING Poetry* offers something for every student of literature.

EXPLORING Poetry presents a unique combination of full-text poetry, in-depth analyses, explanations and examples of the tools that poets (and critics) use to write and interpret poetry. Equally important, Gale Group editors have included essays and other information that provide background, overview and historical context to help understand why these works were written and why they have become classics.

Applications

The understandable, in-depth explanations of 275 poems found in *EXPLORING Poetry* present many opportunities to educators and students including:

- Can act as the foundation of a classroom learning unit or a high-interest addition to an established poetry library
- Educators will find an abundance of ideas for lesson plans. *EXPLORING Poetry* is designed to support curriculum integration, team teaching and the use of technology in the classroom
- School and other network administrators will find the common interface, support of national and local standards and authority offered by The Gale Group reassuring when considering the DISCovering Program for wide-area applications. *EXPLORING Poetry* on GaleNet offers 24-hour remote access from any web-capable computer

Benefits

Students will enjoy a multitude of benefits using *EXPLORING Poetry*, including:

- Wide range of research results — biography, essay, primary document, etc. — offer users a single source for answers to most inquiries
- Fast access and navigation of content
- Consistent interface with other DISCovering Program titles — users completing assignments in multiple subjects don't need to learn new skills to research different subjects
- Complex search strategies are easily implemented — offering results that would be impossible using a comparable print product

Coverage

Full-text and explication of 275 of the most-loved poems along with biographies of poets and essays on each work's background and historical context. Featured poets include:

- Maya Angelou
- Basho
- e.e. cummings
- Robert Frost
- Jose Garcia Villa
- Langston Hughes
- Maxine Kumin
- Denise Levertov
- Eve Merriam
- B. America Paredes
- Edgar Allan Poe
- Christina Georgina Rossetti
- Cathy Song
- Nathan Toomer
- John Updike
- Walt Whitman
- William Butler Yeats
- Scott Momaday

What you'll find

- Full-text poems — coverage of 275 of the most-studied poems in high school and undergraduate courses, including representation from women and multicultural poets and non-Western works
- Critical analyses — line-by-line explications of each poem
- Specially commissioned essays and recordings — contextual essays offer background on works and authors while recordings and interviews add the essential element of voice to many interpretations
- Biographies — biographical sketches of poets offer additional insights into the inspiration behind the works
- Online dictionary/encyclopedia — instant access to definitions of literary terms and difficult words helps make this database a one-stop source
- Timeline — search literary events by year, decade, century or word or phrase from 700 to 1999



Every student will appreciate the accessibility of *EXPLORING Poetry*

The joy of discovery

Each title in The Gale DISCovering Program operates independently but offers a common interface — easily learned and applied across databases. Designed to offer users a multidisciplinary understanding of a particular curriculum-related topic, the databases incorporate numerous cross-references to people, places, ideas that add to a deeper understanding of literature, science, history, social studies and multicultural studies.

Databases in The Gale DISCovering Program include: *EXPLORING Novels*, *EXPLORING Short Stories*, *EXPLORING Shakespeare*, *EXPLORING Poetry*, *DISCovering® Authors Modules*, *DISCovering® Nations, States and Cultures*, *DISCovering® Biography*, *DISCovering® Science*, *DISCovering® U.S. History*, *DISCovering® World History*, and *DISCovering® Multicultural America*.

On CD-ROM:

Named Library Journal Best Reference Source. Offers searching by a poem's title and first line, poet, keyword, timeline, specific word or phrase and more. Includes "Frames," which allows users to display several result screens simultaneously. CD-ROM package includes a 32-page teacher's guide. Requires Windows™* operating system.

On the Internet:

Same search features as the CD-ROM version, except the timeline is not hyperlinked to other data and the interface does not support "Frames." Leasing data with access via the internet involves less maintenance, less infrastructure and allows you to more easily adapt your collection to changing curricular or budgetary demands. Runs on any Internet-capable computer.

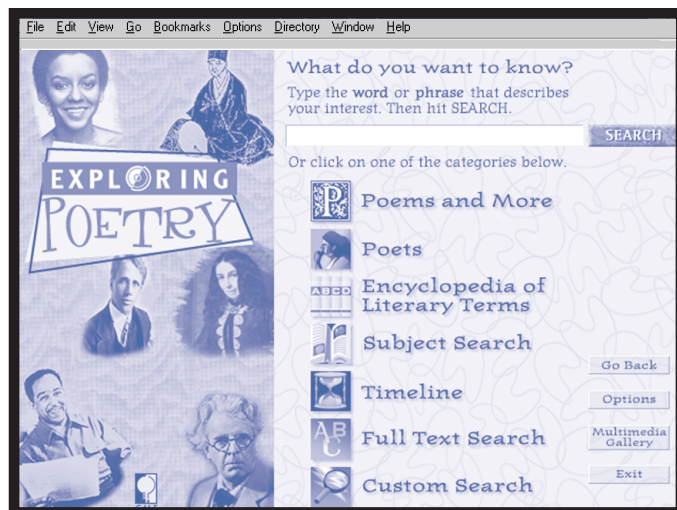
Updates

Every 3 years

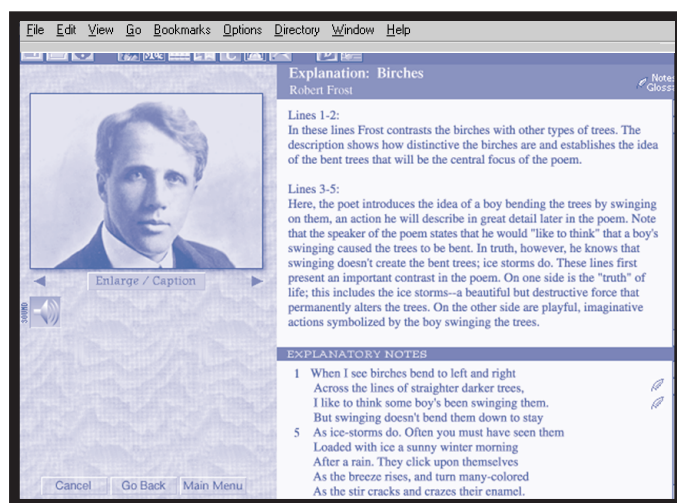
Availability

EXPLORING Poetry is available in CD-ROM format or via subscription through The Gale Group's online reference service, GaleNet. To further explore *EXPLORING Poetry*, go to www.galegroup.com. For additional product or pricing information, call your Gale Group Representative at 1-800-877-GALE.

*Windows is a trademark of the Microsoft Corporation.



▲ A range of search features lets students target their poetry research



▲ Entries provide line-by-line explications — critical to understanding and appreciating poetry



▲ Choose *EXPLORING Poetry* via the Internet for universal access by multiple users

The Gale Group
GALE RESEARCH
INFORMATION ACCESS COMPANY
PRIMARY SOURCE MEDIA

Call your Gale Group Representative for more information: 1-800-877-GALE