

# Teacher's Guide

For the entire

## Hazel Ridge Farm Series

Including:

Adopted by an Owl



Saving Samantha



Kelly of Hazel Ridge



**Author: Robbyn Smith van Frankenhuyzen**  
**Illustrator: Gijsbert van Frankenhuyzen**

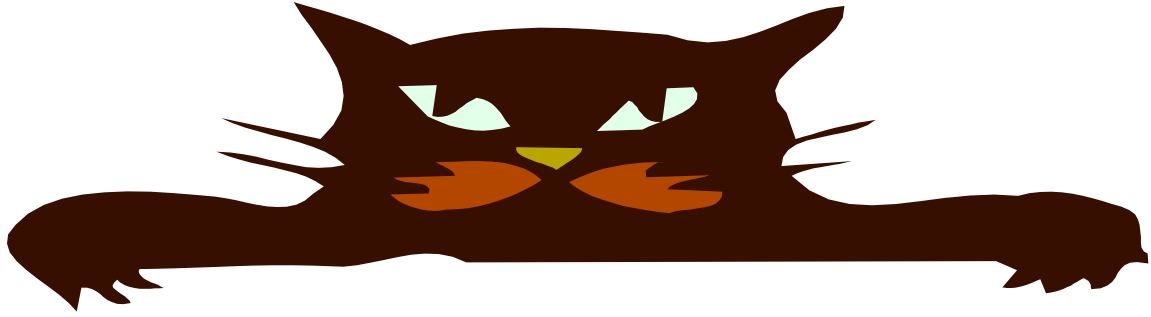


Guide written by Cheryl Grinn

Portions may be reproduced for use in the classroom with this  
express written consent of Sleeping Bear Press

Published by Sleeping Bear Press  
310 N. Main St., Suite 300  
Chelsea, MI 48118  
800-487-2323

[www.sleepingbearpress.com](http://www.sleepingbearpress.com)



## Animals All Around

The Hazel Ridge Farm series contains many stories about animals, both wild and domestic, and their adventures. Below is a list of various animals. Place each animal in its correct category.

### Farm Animals

### Wild Animals

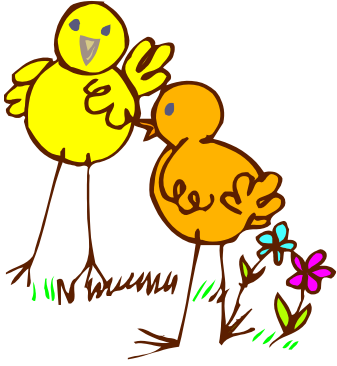
### House Pets

### Birds

---

owl	dog	fox	deer	sheep
blue heron	skunk	cat	horse	goat
opossum	goose	crow	rabbit	finch





# ANIMAL ALLITERATION

Alliteration is when you repeat the beginning consonant sounds in words. For example, Tom touches ten toes. As you read the Hazel Ridge Farm series of books, pay special attention to the different kinds of animals. Write an alliterative sentence using 10 different animals (one animal per line). Have fun and be creative!

1. \_\_\_\_\_
2. \_\_\_\_\_
3. \_\_\_\_\_
4. \_\_\_\_\_
5. \_\_\_\_\_
6. \_\_\_\_\_
7. \_\_\_\_\_
8. \_\_\_\_\_
9. \_\_\_\_\_
10. \_\_\_\_\_

Illustrate your funniest alliteration.

# Cause and Effect

If you step on a sharp rock on the beach you will jump back. This is an example of cause and effect. The cause was stepping on the rock and the effect was jumping back. The rock caused you to jump.

In the Hazel Ridge Farm series you will find many examples of cause and effect.

Complete each sentence with a cause or an effect.

1. Jackson has to go to the owl hospital

cause: \_\_\_\_\_

2. Boy no longer wants owl

effect: \_\_\_\_\_

3. Hunter sets out trap

effect: \_\_\_\_\_

4. Kelly can't find her mother

cause: \_\_\_\_\_

5. Jackson gets pestered by the crows

effect: \_\_\_\_\_



# Jackson's Crossword

The answers to this crossword can be found in *Adopted by an Owl*. This book is part of the Hazel Ridge Farm series which tells the stories that happen on the farm. Read and enjoy all the wonderful books in this series.

**J** \_ \_ \_ \_ \_  
**A** \_ \_ \_ \_  
**C** \_ \_ \_ \_ \_ \_ \_ \_  
**K** \_ \_ \_  
**S** \_ \_ \_ \_ \_  
**O** \_ \_  
**N** \_ \_ \_

1. Name of the great horned owl
2. What a small bird would do if Jackson came near her nest
3. Colors that helped Jackson blend into the tree are called
4. Nick's behavior toward Jackson
5. Sound an owl makes
6. Jackson is this type of bird
7. Man who cared for the owl

# Design a Habitat Diorama

A habitat is the environment in which an animal lives. You won't find lions in the Arctic or polar bears in the jungles because neither would survive. Choose one of the animals from the Hazel Ridge Farm series of books.

Make a diorama of its habitat.

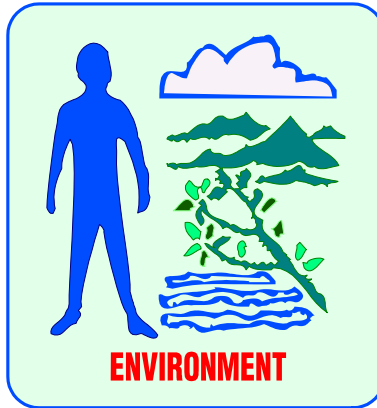
## Materials

shoe box

paper

crayons, markers, paint

Use the area below to draw your diorama. Once you are pleased with it, use your shoe box to make the diorama 3-dimensional.



## How Can You Help Our Environment?

People have been working for many years to help make our world a cleaner and healthier place to live. Do you celebrate Earth Day? Learn the many ways Kelly's parents helped improve the environment in the book *Kelly at Hazel Ridge*.

List 4 things Kelly's parents did to improve the environment at Hazel Ridge.

1. \_\_\_\_\_
2. \_\_\_\_\_
3. \_\_\_\_\_
4. \_\_\_\_\_

List 5 ways you can improve your environment.

1. \_\_\_\_\_
2. \_\_\_\_\_
3. \_\_\_\_\_
4. \_\_\_\_\_
5. \_\_\_\_\_





## Survey and Graph

The Hazel Ridge Farm books tell the stories of animals and people and their adventures on the farm. Read the books *Saving Samantha* and *Adopted by an Owl*. Decide which of the animal characters is your favorite.

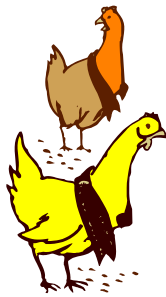
Survey your class to find each student's favorite animal.

**Jackson the owl**    **Samantha the fox**    **Myles the dog**    **Other**

Use the data you collected in the survey to make a bar graph showing the results. Give your graph a title. Make sure it is colorful and easy to read and understand.







## Chicken/Egg Math

The birds in the Hazel Ridge Farm series all lay eggs. See how many types of birds you can find as you read these books.

Solve the following chicken/egg math problems.

1. Ben and Betty collected the day's eggs. Ben collected 87 eggs and Betty collected 69 eggs. How many more eggs did Ben collect than Betty collected?
2. Thirteen dozen eggs were collected in one week. How many total eggs were collected?
3. On Monday 56 eggs were collected, Tuesday 29, Wednesday 37, Thursday 81, Friday 15 (the chickens got tired!). How many total eggs were collected?
4. Kelly collected eggs from 9:00 a.m. until 3:00 p.m. She took a 45-minute lunch break. How many hours did she collect eggs?







# Animal Observations

Robbyn in *Saving Samantha* keeps a journal detailing Samantha's recovery and adventures. Read this book and discover who Samantha is and what happens to her.

Find an animal that you would like to observe for a week. Make sure you will see this animal every day. It could be a pet or a wild animal or bird. You are looking for what the animal does and how it acts.

Monday \_\_\_\_\_

---

---

---

Tuesday \_\_\_\_\_

---

---

---

Wednesday \_\_\_\_\_

---

---

---

Thursday \_\_\_\_\_

---

---

---

Friday \_\_\_\_\_

---

---

---









# Who is Samantha?

Discover Samantha and her unusual adventure in the book *Saving Samantha* from the Hazel Ridge Farm series.

Throughout this book you will find many “named” animals. Write the type of animal with the following names.

1. Samantha \_\_\_\_\_
2. Myles \_\_\_\_\_
3. Igor \_\_\_\_\_
4. Corvis \_\_\_\_\_
5. Black \_\_\_\_\_

Which one is your favorite character? \_\_\_\_\_

Write 3 sentences explaining why you like this character.

---

---

---

---

---



# When Did It Happen?

## Sequencing

Enjoy reading the book *Adopted by an Owl* which is a part of the Hazel Ridge Farm series. You will see that it is a true story.

The story order below has been scrambled. Cut out each sentence and glue the sentences on another piece of paper in the order they happened.

---

Jackson offers Nick mice he caught.

---

Jackson breaks his leg.

---

Boy steals owl chick from its nest.

---

Jackson hides from the crows in a blue spruce.

---

Jackson leaves to be with the other owls in the wild.

---

Nick gives the owl a new home.

---

Jackson returns to Nicks to stay for good.

---



# Finding Story Elements

Choose one of the books from the Hazel Ridge Farm series and read it carefully.

Find the following story elements in the book you chose.

**Title** \_\_\_\_\_

**Author** \_\_\_\_\_

**Illustrator** \_\_\_\_\_

**Two main characters** \_\_\_\_\_

**Describe each of the main characters** \_\_\_\_\_

---

---

---

---

**Describe the problem encountered** \_\_\_\_\_

---

---

---

---

**Describe the solution or solutions** \_\_\_\_\_

---

---

---

---

---

---

---

# Synonyms and Antonyms

Synonyms are words that have similar meanings (happy-glad).  
Antonyms are words that have opposite meanings (hot-cold).  
The following words are from the Hazel Ridge Farm series of books. These books are about the adventures of the people and animals that live on the farm.

Write a synonym next to each word.

1. walk \_\_\_\_\_
2. smell \_\_\_\_\_
3. brave \_\_\_\_\_
4. caught \_\_\_\_\_
5. true \_\_\_\_\_

Write an antonym for each word.

1. wild \_\_\_\_\_
2. brave \_\_\_\_\_
3. calm \_\_\_\_\_
4. sunny \_\_\_\_\_
5. tough \_\_\_\_\_

Write 3 sets of synonyms or antonyms.

1. \_\_\_\_\_
2. \_\_\_\_\_
3. \_\_\_\_\_

# Hazel Ridge Farm

## Answer sheet

**Animals all Around-** Farm animals- sheep, horse, goat Wild animals- fox, skunk, deer, opossum ( rabbit) Birds- owl, goose, crow, blue heron finch House pet- dog, cat (rabbit)

**Cause and Effect-** 1) broke his leg 2) Nick takes home 3) Samantha breaks leg 4) Pays no attention to where she is going 5) hides in blue spruce

**Crossword-** 1) Jackson 2) attack 3) camouflage 4) kind 5) screech 6) owl 7) Nick

**Help Our Environment-** 1) planted trees 2) dug ponds 3) made wetlands 4) seeded wild prairies

**Chicken/Egg Math-** 1) 18 2) 156 3) 218 4) 5 ¼ hrs.

**Who is Samantha-** 1) fox 2) dog 3) rooster 4) crow 5) rooster

**When Did It Happen-** 1) boy steals owl 2) Nick takes owl home 3) Jackson gives Nick a mouse 4) Jackson hides in a blue spruce 5) Jackson breaks his leg 6) Jackson goes to live in the wild 7) Jackson returns to Nick for good