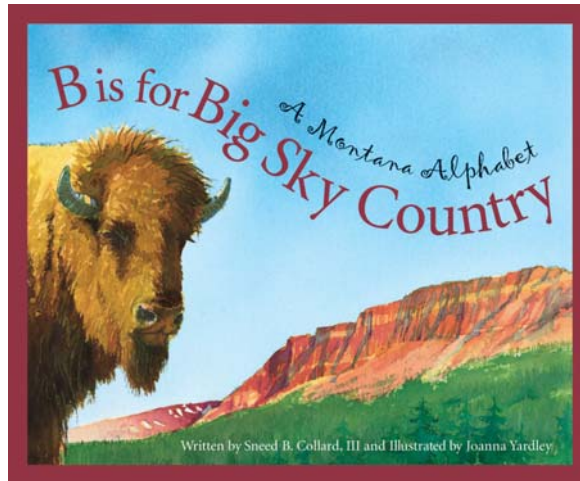


# A Teacher's Guide



## B is for Big Sky Country: A Montana Alphabet

Guide written by  
Cheryl K. Grinn

Portions may be reproduced for use in the classroom with this  
express written consent of Sleeping Bear Press

Published by Sleeping Bear Press  
310 North Main  
Chelsea, MI 48118  
800-487-2323  
[www.sleepingbearpress.com](http://www.sleepingbearpress.com)

## Correlation to Montana Standards for Social Studies

**Content Standard 1-** Students access, synthesize, and evaluate information to communicate and apply social studies knowledge to real world situations.

*Do You Know*

*Montana's Mighty*

*Symbols of Montana*

**Content Standard 3-** Students apply geographic knowledge and skills.

*Montana's Geography*

*Super Map Reader*

*Glacier Is Great*

*Killer Weeds Invade*

**Content Standard 4-** Students demonstrate an understanding of the effects of time, continuity, and change on historical and future perspectives and relationships.

*Little Bighorn Battle*

*Dinosaur Discovery*

*When Did It Happen*

**Content Standard 5-** Students make informed decisions based on an understanding of the economic principles of production, distribution, exchange, and consumption.

*Tourism = Jobs*

*Different Viewpoints*

**Content Standard 6-** Students demonstrate an understanding of the impact of human interaction and cultural diversity of societies.

*Native Peoples Rule*

# MONTANA'S MIGHTY



You will find facts about many interesting Montana personalities when you read the book *B is for Big Sky Country*. Use the information you learn to match up Montana's mighty with the reason they are famous.

1. \_\_\_\_\_ Jeanette Rankin
  2. \_\_\_\_\_ Myrna Loy
  3. \_\_\_\_\_ Charlie Russell
  4. \_\_\_\_\_ Shep
  5. \_\_\_\_\_ Jack Horner
  6. \_\_\_\_\_ William Clark
- a. Montana's most faithful dog.
  - b. artist
  - c. discovered first dinosaur eggs.
  - d. first American woman elected to a national office.
  - e. Queen of the Movies
  - f. famous explorer who carved his name in Pompey's Tower.

# Symbols of Montana

Montana's state symbols are found throughout the book *B is for Big Sky Country*. See if you can find the following symbols and write their names on the lines.

1. state flower \_\_\_\_\_

2. state fish ( 2)  
\_\_\_\_\_  
\_\_\_\_\_

3. state fossil \_\_\_\_\_

4. state grass \_\_\_\_\_

5. state tree \_\_\_\_\_

6. state gemstone (2) \_\_\_\_\_

7. state animal \_\_\_\_\_

8. official state nickname \_\_\_\_\_

9. state bird \_\_\_\_\_

Choose two of Montana's symbols and draw and color pictures of them.

# Little Bighorn Battle

You have been assigned the task of writing a newspaper article based on the Battle of Little Bighorn. You can get information to help you with your article in the book *B is for Big Sky Country*, on the L page. Write this article from the perspective of the Sioux and Cheyenne.

The graphic organizer will help you to organize your thoughts before you write your article.

WHO \_\_\_\_\_

WHAT \_\_\_\_\_

WHERE \_\_\_\_\_

WHEN \_\_\_\_\_

WHY \_\_\_\_\_

HOW \_\_\_\_\_

**REMEMBER**, you are writing this account as if you were reporting for the Native Americans.

How do you think your article would change if you wrote it from the perspective of the U.S. Army?

# Do you know?

## Crossword Puzzle

*B is for Big Sky Country* will help you to solve this Montana crossword puzzle.

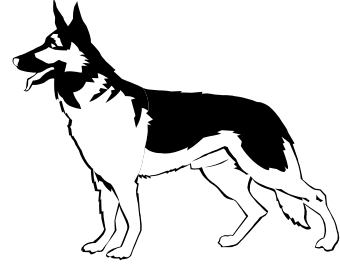
1. \_ \_ \_ \_ \_ \_ \_ \_
2. \_ \_ \_ \_ \_ \_
3. \_ \_ \_ \_ \_ \_ \_ \_ \_ \_ \_ \_
4. \_ \_ \_ \_ \_ \_ \_ \_ \_ \_ \_ \_ \_ \_
5. \_ \_ \_ \_ \_ \_ \_ \_
6. \_ \_ \_ \_ \_ \_ \_ \_ \_ \_ \_ \_ \_ \_ \_ \_
7. \_ \_ \_ \_ \_

1. Center for Montana's music, arts and theatre
2. Birds that nest on telephone poles along rivers
3. Lived in Montana before Europeans arrived
4. Official nickname of Montana
5. Largest producer of copper in the world
6. Pompey's Pillar
7. Gary Cooper

HINT: If you take the first letter of each answer in the crossword you will find the name of the great state of \_\_\_\_\_.

# Is Montana Really a Dog State?

The book *B is for Big Sky Country* tells you the story of a very famous Montana dog named Shep. Read this story and then find out if Montana is really dog country.



Survey 15 classmates to see which of the following is their favorite pet. Keep track of your classmates' answers in a list below.

**Dog • Cat • Horse • Fish • Other**

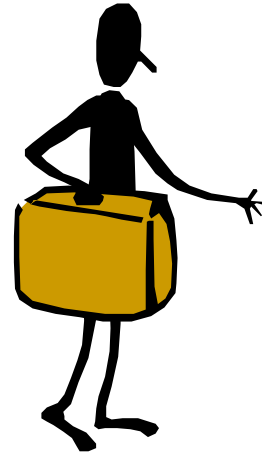
**Student**

**Favorite Pet**

Use this data to create a bar graph. Make sure you label your columns. Your graph will need a title. Use bright colors as you color in your bars.

# Tourism = Jobs

Tourism is a major industry in Montana. The book *B is for Big Sky Country* is full of ideas showing why tourism is important to Montana's economy.



Make a list of as many different jobs as possible that tourism makes for the state of Montana.

List the ways you and your family have supported Montana by visiting a tourist attraction.

# Super Map Reader



Get a Montana map and see how long it takes you to find the following places that are described in the book *B is for Big Sky Country*.

1. *Ekalaka*
2. *Flathead Lake*
3. *Glacier National Park*
4. *Helena*
5. *Missoula*
6. *Virginia City*
7. *Butte*
8. *Yellowstone River*
9. *Missouri River*
10. *Columbia River*

It took me \_\_\_\_\_ minutes to find all the places.

# Measuring Montana

Choose the measure of distance you would use for each object. Read about these animals and places in the book *B is for Big Sky Country*.

## Measures

inch

foot = 12 inches

yard = 3 feet

mile = 1,760 yards

OBJECT	MEASURE
1. An otter	_____
2. Height of Pompey's Tower	_____
3. Distance from Virginia City to Helena	_____
4. Length of Yellowstone River	_____
5. Length of a bison from nose to tail	_____
6. University of Montana's football field	_____
7. A cutthroat trout	_____
8. Wingspan of an osprey	_____
9. Height of a meadow jumping mouse	_____
10. Distance around a dinosaur egg	_____



# Montana Minute Minders

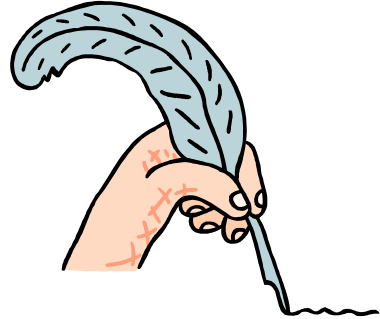
Do you have an extra minute to fill? These questions are based on the book *B is for Big Sky Country*.

1. Name the capital of Montana.
2. Write three facts about Montana's history.
3. Write a description of where you live in Montana or might want to live in Montana. Include the location within the state, the landscape of the area, and the industries in the area.
4. Name a famous Montana person and tell why they are famous.
5. Name the alphabet book about Montana.
6. Write a math word problem about Montana.
7. Draw a picture of yourself doing your favorite activity in Montana.
8. Write something you recently read or heard about Montana in the news.
9. Name the first official town in Montana.
10. Name three wild animals found in Montana.
11. Which national park is in Montana?



# Fun with Poetry

Many interesting and fun facts about Montana are in the book *B is for Big Sky Country*. Choose one of the ideas found in the book and write a cinquain poem.



A cinquain poem has five lines.  
Line 1 (same as the title) has one word  
Line 2 describes the title in two words  
Line 3 has three words that express action  
Line 4 has four words that express feeling  
Line 5 is one word referring to the title

## Example

water  
cool, wet  
drinking, swimming, splashing  
refreshing, relaxing, laid-back  
summer

---

---

---

---

---

---

# When Did It Happen?

A timeline helps you to see the order in which events happened. In the book *B is for Big Sky Country* you will read about many events in Montana's great history.

You can create your own timeline by finding the dates for the following events. After you have the correct dates, put them in the correct order on the timeline. Make sure you leave space where there are large gaps in time.

\_\_\_\_\_ Glacier National Park was created

\_\_\_\_\_ Helena became the state capital

\_\_\_\_\_ Battle for Little Bighorn fought

\_\_\_\_\_ William Clark carves his name on Pompey's Tower

\_\_\_\_\_ Virginia City becomes the first official town

\_\_\_\_\_ Wolves return to Montana

\_\_\_\_\_ The word Montana is added to the state flag

# Montana Timeline



# Different Viewpoints



Montana once was the world's leading producer of copper. Read about copper's importance to Montana in the book *B is for Big Sky Country*.

Write a sentence explaining the importance of copper from the viewpoint of each of the following people and things.

1. A copper miner \_\_\_\_\_

2. An artist \_\_\_\_\_

3. A penny \_\_\_\_\_

4. A Native American \_\_\_\_\_

5. The dome of the capitol \_\_\_\_\_

6. A telephone wire \_\_\_\_\_

7. A rock collector \_\_\_\_\_

# Killer Weeds Invade!



Montana has had a problem with weeds from other places killing many of its native plants. *B is for Big Sky Country* will help you to understand this problem.

You and a partner have been given the job of being junior environmentalists! It is your job to brainstorm a list of ways to get rid of Montana's killer weeds. Choose your ten best ideas after your brainstorming and write them below.

1. \_\_\_\_\_
2. \_\_\_\_\_
3. \_\_\_\_\_
4. \_\_\_\_\_
5. \_\_\_\_\_
6. \_\_\_\_\_
7. \_\_\_\_\_
8. \_\_\_\_\_
9. \_\_\_\_\_
10. \_\_\_\_\_

Challenge- Send your list to the department in your state that deals with the environment.



## Dinosaur Discovery *continued*

Draw a picture of the discovery you made on Egg Mountain. Make sure you show the bones!



# Glacier Is Great

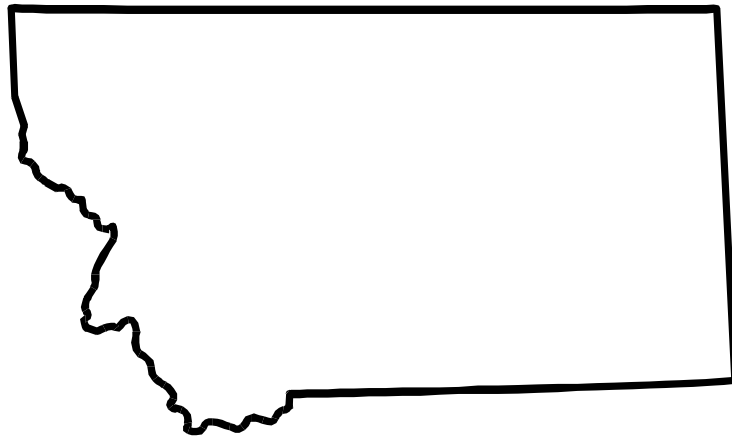
Glacier National Park is a wonderful place to visit! Information about the park can be found on the G page of *B is for Big Sky Country*.

Design a brochure that encourages people to visit Glacier National Park. Tell them why it is so wonderful.

## Directions

1. Take a plain sheet of paper and fold it in half the long way.
2. The front of your paper is the cover. Design your cover so that it is bright and attracts attention. Don't forget to put the name of the park on the cover.
3. Inside give facts about Glacier National Park. Make your facts interesting. Don't just make a list.
4. On the back put the name of the author who created the brochure (YOU).
5. Mail your brochure to a friend in a different state and encourage them to visit Glacier National Park.

# What Surrounds Montana?



Draw and label the following:

1. States that surround Montana
2. Montana's capital
3. Montana's three largest rivers

# Montana Wildlife

***B is for Big Sky Country* contains information about many Montana wild animals. Read this book and have fun making your own Montana wildlife book.**

## DIRECTIONS:

1. CUT TWO PIECES OF PLAIN PAPER IN HALF (LENGTH WISE)
2. STACK THE FOUR PIECES OF PAPER YOU NOW HAVE.
3. FOLD THE STACK IN HALF, TO MAKE A BOOK.
4. MAKE A COVER FOR YOUR BOOK.
5. STAPLE THE PAGES, INCLUDING THE COVER, ALONG THE FOLDED END.
6. PUT A TITLE ON THE COVER OF YOUR BOOK.
7. ON EACH PAGE INSIDE YOUR BOOK DRAW AND COLOR A MONTANA WILD ANIMAL. ADD ONE SENTENCE ABOUT WHY THIS ANIMAL IS IMPORTANT.

## Montana Answer Sheet

**MEASURING MONTANA** 1) feet or inch 2) feet 3) mile 4) miles 5) feet  
6) yards 7) inch 8) feet, inch 9) inch 10) inch

**WHEN DID IT HAPPEN** Glacier 1910, Helena 1894, Battle 1876, Clark 1806,  
Virginia City 1864, Wolves 1979, Montana flag 1981

**DO YOU KNOW CROSSWORD PUZZLE** 1) Missoula 2) osprey 3) Native  
peoples 4) Treasure State 5) Anaconda 6) national monument  
7) actor

**SYMBOLS OF MONTANA** 1) bitterroot 2) Western slope and Yellowstone  
cutthroat trout 3) duck-billed dinosaur 4) blue bunch wheat grass 5) Ponderosa  
pine 6) sapphire, moss agate 7) grizzly bear 8) Treasure State 9) Western  
meadowlark

**MONTANA'S MIGHTY** 1) d 2) e 3) b 4) a 5) c 6) f